

**JUMO GmbH & Co. KG**

Delivery address: Mackenrodtstraße 14  
36039 Fulda, Germany  
Postal address: 36035 Fulda, Germany  
Phone: +49 661 6003-0  
Fax: +49 661 6003-607  
E-mail: mail@jumo.net  
Internet: www.jumo.net

**JUMO Instrument Co. Ltd.**

JUMO House  
Temple Bank, Riverway  
Harlow, Essex CM20 2DY, UK  
Phone: +44 1279 635533  
Fax: +44 1279 635262  
E-mail: sales@jumo.co.uk  
Internet: www.jumo.co.uk

**JUMO Process Control, Inc.**

8 Technology Boulevard  
Canastota, NY 13032, USA  
Phone: 315-697-5866  
1-800-554-JUMO  
Fax: 315-697-5867  
E-mail: info.us@jumo.net  
Internet: www.jumousa.com



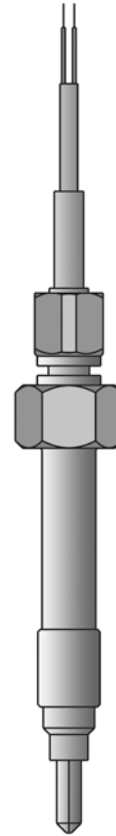
## Screw-in melt thermocouples

- Temperature range from -40 ... +600 °C
- Available with different thermocouples
- Stainless steel thermowell and probe tip
- Structure insulated or connected with probe tip
- Ceramic insulated probe tip
- For application in the plastics processing industry

Screw-in melt thermocouples are preferably used for temperature measurement to record the melt temperature in the plastics processing industry.

Blade shaped or plane probe tips ensure optimum temperature recording depending on the requirements. Depending on their version, the thermal lines are suitable for a temperature range of -40 ... +400 °C.

The measuring insert is equipped with thermal pairs (thermocouples) according to DIN EN 60584 and/or DIN 43710 as a standard.



## Technical Data

<b>Connection</b>	Stripped wire ends, with ferrules, also available with multi-pole connector, Connector, 2-pin, IP50
<b>Thermal line</b>	PTFE, ambient temperature -40 ... +260 °C metal braiding, ambient temperature -40 ... +400 °C
<b>Process connection</b>	thread, stainless steel 1.4571
<b>Thermowell</b>	stainless steel 1.4571
<b>Measuring insert</b>	Insulated structure 1× Fe-CuNi "J", DIN EN 60584, cl. 2, operating temperature -40 ... +400 °C (+600 °C) 1× Fe-CuNi "L", DIN 43710, cl. 2, operating temperature -40 ... +400 °C (+600 °C) 1× NiCr-Ni "K", DIN EN 60584, cl. 2, operating temperature -40 ... +400 °C (+600 °C)
<b>Accessories</b>	Mating connector 2-pin, size II, data sheet 909760, Pos. 5

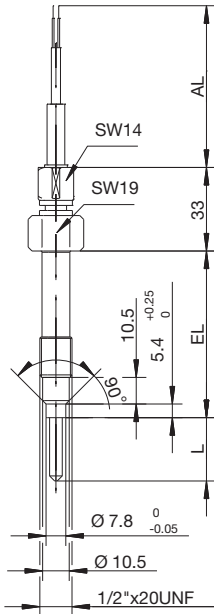
**JUMO GmbH & Co. KG**  
 Delivery address: Mackenrodtstraße 14  
 36039 Fulda, Germany  
 Postal address: 36035 Fulda, Germany  
 Phone: +49 661 6003-0  
 Fax: +49 661 6003-607  
 E-mail: mail@jumo.net  
 Internet: www.jumo.net

**JUMO Instrument Co. Ltd.**  
 JUMO House  
 Temple Bank, Riverway  
 Harlow, Essex CM20 2DY, UK  
 Phone: +44 1279 635533  
 Fax: +44 1279 635262  
 E-mail: sales@jumo.co.uk  
 Internet: www.jumo.co.uk

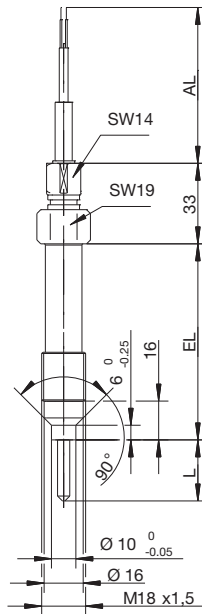
**JUMO Process Control, Inc.**  
 8 Technology Boulevard  
 Canastota, NY 13032, USA  
 Phone: 315-697-5866  
 1-800-554-JUMO  
 Fax: 315-697-5867  
 E-mail: info.us@jumo.net  
 Internet: www.jumousa.com



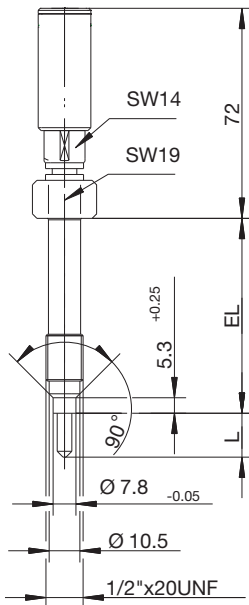
## Dimensions



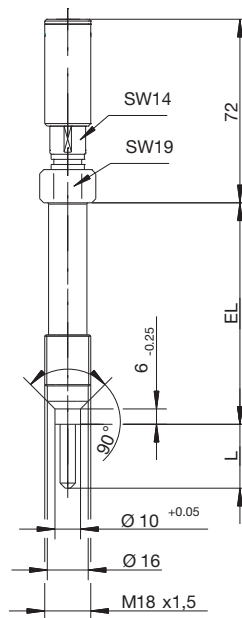
Basic type 901090/10 ...  
 1/2" x 20 UNF



Basic type 901090/10 ...  
 M18 x 1.5



Basic type 901090/20 ...  
 1/2" x 20 UNF

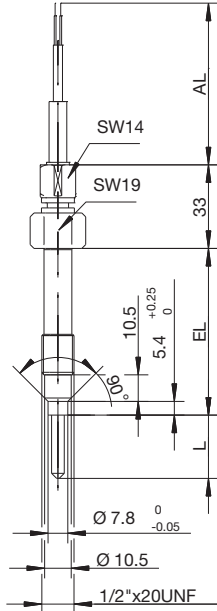


Basic type 901090/20 ...  
 M18 x 1.5

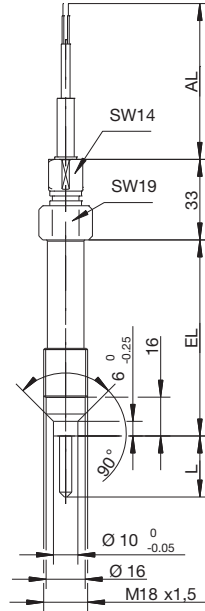
**JUMO GmbH & Co. KG**  
 Delivery address: Mackenrodtstraße 14  
 36039 Fulda, Germany  
 Postal address: 36035 Fulda, Germany  
 Phone: +49 661 6003-0  
 Fax: +49 661 6003-607  
 E-mail: mail@jumo.net  
 Internet: www.jumo.net

**JUMO Instrument Co. Ltd.**  
 JUMO House  
 Temple Bank, Riverway  
 Harlow, Essex CM20 2DY, UK  
 Phone: +44 1279 635533  
 Fax: +44 1279 635262  
 E-mail: sales@jumo.co.uk  
 Internet: www.jumo.co.uk

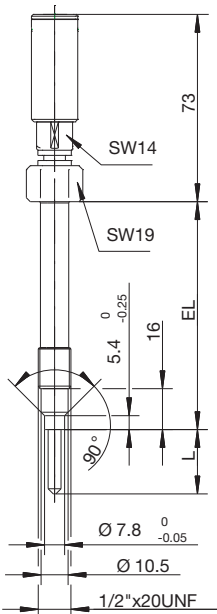
**JUMO Process Control, Inc.**  
 8 Technology Boulevard  
 Canastota, NY 13032, USA  
 Phone: 315-697-5866  
 1-800-554-JUMO  
 Fax: 315-697-5867  
 E-mail: info.us@jumo.net  
 Internet: www.jumousa.com



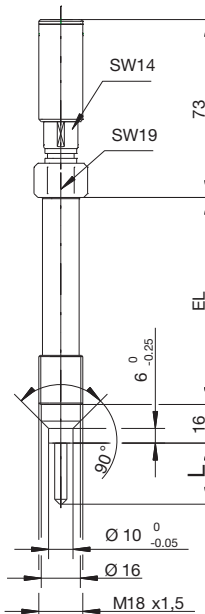
**Basic type 901090/50 ...**  
**1/2" x 20 UNF**



**Basic type 901090/50 ...**  
**M18 x 1.5**



**Basic type 901090/60 ...**  
**1/2" x 20 UNF**



**Basic type 901090/60 ...**  
**M18 x 1.5**

**JUMO GmbH & Co. KG**  
 Delivery address: Mackenrodtstraße 14  
 36039 Fulda, Germany  
 Postal address: 36035 Fulda, Germany  
 Phone: +49 661 6003-0  
 Fax: +49 661 6003-607  
 E-mail: mail@jumo.net  
 Internet: www.jumo.net

**JUMO Instrument Co. Ltd.**  
 JUMO House  
 Temple Bank, Riverway  
 Harlow, Essex CM20 2DY, UK  
 Phone: +44 1279 635533  
 Fax: +44 1279 635262  
 E-mail: sales@jumo.co.uk  
 Internet: www.jumo.co.uk

**JUMO Process Control, Inc.**  
 8 Technology Boulevard  
 Canastota, NY 13032, USA  
 Phone: 315-697-5866  
 1-800-554-JUMO  
 Fax: 315-697-5867  
 E-mail: info.us@jumo.net  
 Internet: www.jumousa.com



**Order details: Screw-in melt thermocouples**

**(1) Basic type**

901090/10	Screw-in melt thermocouples with thermal line	
901090/20	Screw-in melt thermocouples with plug connector (LEMO device outlet ERA-2S)	
901090/50	Screw-in melt thermocouples with thermal line and ceramic insulated probe tip	
901090/60	Screw-in melt thermocouples with plug connector (LEMO device outlet ERA-2S) and ceramic insulated probe tip	

<b>(2) Operating temperature in °C/thermal line</b>	
x x x x	493 -40 ... +260 °C/PTFE
x x x x	505 -40 ... +400 °C/Metal braiding
x x x x	515 -40 ... +600 °C/Metal braiding

<b>(3) Measuring insert</b>	
x x x x	1040 1× Fe-CuNi "J"
x x x x	1042 1× Fe-CuNi "L"
x x x x	1043 1× NiCr-Ni "K"

<b>(4) Fitting length EL in mm</b>	
x x x x	152 152 mm (Standard)
x x x x	... Specifications in plain text

<b>(5) Probe tip shape</b>	
x x	1 Flat
x x x x	4 Blade

<b>(6) Probe tip length L in mm</b>	
x x	0 Flat
x x x x	5 5 mm
x x x x	10 10 mm
x x x x	15 15 mm
x x x x	20 20 mm
x x x x	25 25 mm

<b>(7) Material/surface of the probe tip</b>	
x x x x	26 1.4571 (Standard)
x x x x	39 1.4571 coating as per agreement

<b>(8) Process connection</b>	
x x x x	126 M18 × 1.5
x x x x	153 1/2" × 20 UNF

<b>(9) Thermal line end</b>	
x x	00 None
x x	03 stripped wires
x x	11 Ferrules as per DIN 46228 Part 4 (Standard)
x x	80 Multi-pole connector (enter type in plain text)

<b>(10) Thermal line length AL in mm</b>	
x x x x	0000 None
x x	3000 3000 mm
x x	... Please specify in plain text (500 mm steps)

<b>(11) Extra codes</b>	
x x x x	000 None
x x x x	309 uninsulated structure (element welded to the base)
x x	315 Anti-kink spring
x	853 Metal protection hose on the thermal line

<b>Order code</b>	(1)	(2)	(3)	(4)	(5)	(6)	(7)	(8)	(9)	(10)	(11)	, ... <sup>1</sup>
<b>Order example</b>	901090/10	- 505	- 1042	- 152	- 4	- 15	- 26	- 153	- 11	- 3000	/ 315	

<sup>1</sup> List extra codes in sequence, separated by commas.

**JUMO GmbH & Co. KG**

Delivery address: Mackenrodtstraße 14  
 36039 Fulda, Germany  
 Postal address: 36035 Fulda, Germany  
 Phone: +49 661 6003-0  
 Fax: +49 661 6003-607  
 E-mail: mail@jumo.net  
 Internet: www.jumo.net

**JUMO Instrument Co. Ltd.**

JUMO House  
 Temple Bank, Riverway  
 Harlow, Essex CM20 2DY, UK  
 Phone: +44 1279 635533  
 Fax: +44 1279 635262  
 E-mail: sales@jumo.co.uk  
 Internet: www.jumo.co.uk

**JUMO Process Control, Inc.**

8 Technology Boulevard  
 Canastota, NY 13032, USA  
 Phone: 315-697-5866  
 1-800-554-JUMO  
 Fax: 315-697-5867  
 E-mail: info.us@jumo.net  
 Internet: www.jumousa.com

**Stock version**

(1)	(2)	(3)	(4)	(5)	(6)	(7)	(8)	(9)	(10)	(11)	Part no.
901090/10	- 505	- 1042	- 152	- 4	- 10	- 26	- 153	- 11	- 3000	/ 000	00525149