

JUMO GmbH & Co. KG
Delivery address: Mackenrodtstraße 14
36039 Fulda, Germany
Postal address: 36035 Fulda, Germany
Phone: +49 661 6003-0
Fax: +49 661 6003-607
Email: mail@jumo.net
Internet: www.jumo.net

JUMO Instrument Co. Ltd.
JUMO House
Temple Bank, Riverway
Harlow, Essex, CM20 2DY, UK
Phone: +44 1279 63 55 33
Fax: +44 1279 62 50 29
Email: sales@jumo.co.uk
Internet: www.jumo.co.uk

JUMO Process Control, Inc.
6733 Myers Road
East Syracuse, NY 13057, USA
Phone: +1 315 437 5866
Fax: +1 315 437 5860
Email: info.us@jumo.net
Internet: www.jumousa.com



JUMO HEATtemp

Screw-in RTD temperature probe for heat meter with terminal head for direct mounting (type DL)

- For temperatures between 0 and 180 °C
- Type examination certificate for MID heat meters as replaceable temperature probes
- Fulfills the requirements of DIN EN 1434, AGFW FW 202, and FW 211
- Pairing and declaration of conformity according to MID
- Production certified according to module D (MID) (CE and metrology identification marking)

Heat meter RTD temperature probes are used for temperature measurement in closed pipeline systems. Direct mounting without an additional immersion sleeve is recommended to achieve optimum thermal coupling to the measurement medium in the heating system.

The temperature probes are approved according to the EU Directive 2014/32/EU (MID).

The implementation of the requirements of the European Directive 2014/32/EU (MID) ensures that our temperature probe pairs can be deployed as a sub-assembly for heat meters when operated in line with their intended use.

The temperature probes are also available in paired and conformity-assessed versions. The officially recognized test facility for heat KHE2 is available for this purpose. Production has been certified according to Annex D of Directive 2014/32/EU and Annex 4 Module D of the German Weights and Measures Act.



Technical data

Terminal head	Form J, aluminium die-cast, M16 × 1.5, IP65, ambient temperature -20 to +100 °C
Process connection	Thread G 1/2, stainless steel
Protection tube	Stainless steel, Ø 6 mm or Ø 8 mm stepped down to Ø 6 mm
Measuring insert	Platinum temperature sensor according to DIN EN 60751 Nominal value: Pt100, Pt500, or Pt1000 Connection: two-wire or four-wire circuit
Temperature	0 to 180 °C
Temperature difference	3 to 180 K
Minimum immersion depth	25 mm
Insertion length	85 to 280 mm
Maximum pressure	PS 25
Flow velocity	2 m/s (water)
Response	$t_{0.5} \leq 5$ s
Thermoelectric voltage	≤ 5 µV
Environmental influences	Climatic 5 to 55 °C Protection type IP65 Mechanical M3

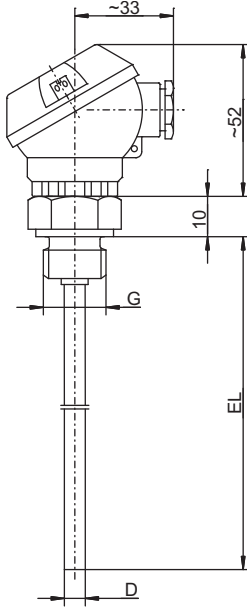
JUMO GmbH & Co. KG
 Delivery address: Mackenrodtstraße 14
 36039 Fulda, Germany
 Postal address: 36035 Fulda, Germany
 Phone: +49 661 6003-0
 Fax: +49 661 6003-607
 Email: mail@jumo.net
 Internet: www.jumo.net

JUMO Instrument Co. Ltd.
 JUMO House
 Temple Bank, Riverway
 Harlow, Essex, CM20 2DY, UK
 Phone: +44 1279 63 55 33
 Fax: +44 1279 62 50 29
 Email: sales@jumo.co.uk
 Internet: www.jumo.co.uk

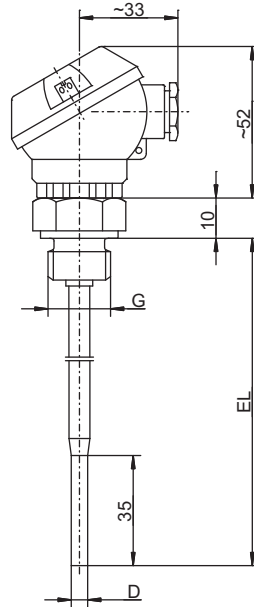
JUMO Process Control, Inc.
 6733 Myers Road
 East Syracuse, NY 13057, USA
 Phone: +1 315 437 5866
 Fax: +1 315 437 5860
 Email: info.us@jumo.net
 Internet: www.jumousa.com



Dimensions



Basic type 902427/10 (DL)



Basic type 902427/11 (DL)

JUMO GmbH & Co. KG
 Delivery address: Mackenrodtstraße 14
 36039 Fulda, Germany
 Postal address: 36035 Fulda, Germany
 Phone: +49 661 6003-0
 Fax: +49 661 6003-607
 Email: mail@jumo.net
 Internet: www.jumo.net

JUMO Instrument Co. Ltd.
 JUMO House
 Temple Bank, Riverway
 Harlow, Essex, CM20 2DY, UK
 Phone: +44 1279 63 55 33
 Fax: +44 1279 62 50 29
 Email: sales@jumo.co.uk
 Internet: www.jumo.co.uk

JUMO Process Control, Inc.
 6733 Myers Road
 East Syracuse, NY 13057, USA
 Phone: +1 315 437 5866
 Fax: +1 315 437 5860
 Email: info.us@jumo.net
 Internet: www.jumousa.com



Overview of approvals

Basic type	Type examination certificate	
	Type	Number
902427/10 (DL) 902427/11 (DL) DL = Direct long (long temperature probe, without immersion sleeve)	Module B of MID ^a (heat)	DE-06-MI004-PTB015

^a MID = Measuring Instruments Directive, 2014/32/EU

JUMO GmbH & Co. KG
 Delivery address: Mackenrodtstraße 14
 36039 Fulda, Germany
 Postal address: 36035 Fulda, Germany
 Phone: +49 661 6003-0
 Fax: +49 661 6003-607
 Email: mail@jumo.net
 Internet: www.jumo.net

JUMO Instrument Co. Ltd.
 JUMO House
 Temple Bank, Riverway
 Harlow, Essex, CM20 2DY, UK
 Phone: +44 1279 63 55 33
 Fax: +44 1279 62 50 29
 Email: sales@jumo.co.uk
 Internet: www.jumo.co.uk

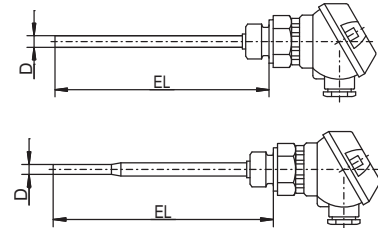
JUMO Process Control, Inc.
 6733 Myers Road
 East Syracuse, NY 13057, USA
 Phone: +1 315 437 5866
 Fax: +1 315 437 5860
 Email: info.us@jumo.net
 Internet: www.jumousa.com



Order details: Heat meter RTD temperature probe with terminal head

(1) Basic type

902427/10	Screw-in RTD temperature probe with terminal head form J (standard) and continuous protection tube, design type DL
902427/11	Screw-in RTD temperature probe with terminal head form J (standard) and stepped protection tube, design type DL



(2) Operating temperature in °C

x	x	824	0 to 150 °C
x	x	830	0 to 180 °C

(3) Measuring insert

x	x	1003	1 × Pt100 in two-wire circuit
x	x	1004	1 × Pt500 in two-wire circuit
x	x	1005	1 × Pt1000 in two-wire circuit
x	x	1011	1 × Pt100 in four-wire circuit
x	x	1012	1 × Pt500 in four-wire circuit
x	x	1013	1 × Pt1000 in four-wire circuit

(4) Tolerance class according to DIN EN 60751

x	x	1	Class B (standard)
x	x	2	Class A
x	x	3	Class AA

(5) Protection tube diameter D in mm

x		6	Ø 6 mm (max. admissible EL = 210 mm)
	x	8	Ø 8 mm stepped down to Ø 6 mm (max. admissible EL = 280 mm)

(6) Insertion length EL in mm (85 to 280 mm)

x	x	85	85 mm
x	x	120	120 mm
x	x	210	210 mm
x	x	...	Specifications in plain text

(7) Process connection

x	x	104	Screw connection G 1/2
x	x	...	Specifications in plain text

(8) Extra codes

x	x	000	None
x	x	319	Terminal head form B
x	x	340	Paired according to DIN EN 1434 ^a
x	x	761	Paired according to DIN EN 1434 with conformity assessment/identification marking according to MID ^a (heat)

^a Price for pairing depends on number of units; cost effective from 30 pairs of temperature probes

Order code	(1)	(2)	(3)	(4)	(5)	(6)	(7)	(8)	...								
Order example	902427/10	-	824	-	1003	-	1	-	6	-	85	-	104	/	761	,	...

^a List extra codes in sequence and separate using commas.

Note:
 Terminal heads, data sheet 909715
 Accessories, data sheet 902442